

State of Wyoming Corner Record

(In compliance with the *CORNER PERPETUATION AND FILING ACT*, Wyoming Statutes, 1997, Section 33-29-140, et seq., and the Rules and Regulations of the Board of Registration for Professional Engineers and Professional Land Surveyors)

Reverse side of this form may be used if more space is needed.

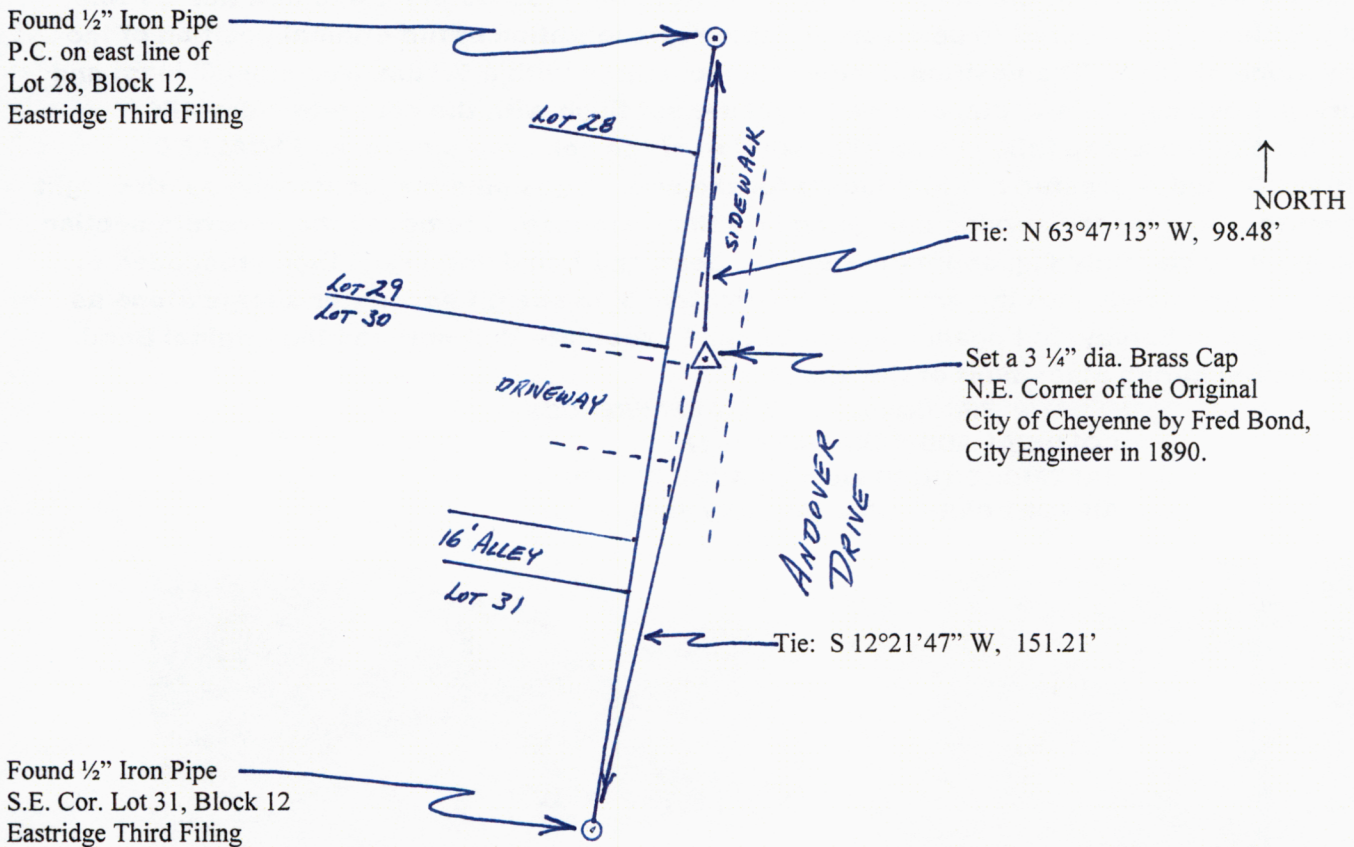
Record of original survey and citation of source of historical information (if corner is lost or obliterated). Description of corner monumentation evidence found and/or monument and accessories established to perpetuate the location of this corner. Sketch of relative location of monument, accessories, and reference points with course and distance to adjacent corner(s) (if determined in this survey). Method and rationale for reestablishment of lost or obliterated corner.

The Original City of Cheyenne survey completed by Fred Bond, City Engineer in April and May, 1890, recorded in the office of the County Clerk and Recorder of Laramie County, Wyoming, on June 16, 1890, and recorded in Book 40, Page 190. Pursuant to an Ordinance of the City Council dated March 18, 1890; in compliance with the provisions of an Act of the Eleventh Legislative Assembly of the Territory of Wyoming entitled "An act concerning the location of the boundaries, and providing for the extension of the limits of cities and towns, approved March 14 A.D. 1890".

RECORD: NORTHEAST CORNER - Per review and approval of the field notes as recorded in Cheyenne City - Ordinance Book 2, Pages 376 - 380; "set a Sandstone 12"x14"x36", eighteen inches in the ground and marked 'Cheyenne City' in a plain and permanent manner on the south face."

NOT FOUND: SEE - SURVEYOR'S REPORT on following page.

SET: 3 1/4" diameter survey brass cap (see photos on next page), set flush in the concrete sidewalk in a 3' long, 3/4" iron pipe. See RECORD OF SURVEY recorded in the Laramie County Clerk's Office under Reception No. 606184 in Bk. 2313 Pg. 41.



Date of Field Work: Aug. 2011

Office Reference: _____

CROSS INDEX DIAGRAM

	1	2	3	4	5	6	7	8	9	10	11	12	13	14	15	16	17	18	19	20	21	22	23	24	25
A																									
B																									
C		6		5		4		3		2		1													
D																									
E																									
F																									
G		7		8		9		10		11		12													
H																									
J																									
K																									
L		18		17		16		15		14		13													
M																									
N																									
O																									
P		19		20		21		22		23		24													
Q																									
R																									
S																									
T		30		29		28		27		26		25													
U																									
V																									
W																									
X		31		32		33		34		35		36													
Y																									
Z																									

Land Surveyor / Firm / Address

John J. Studley, LS No. 4828

City of Cheyenne, City Surveyor

2101 O'Neil Ave., Room 206

Cheyenne, Wyoming 82001

Telephone: **307-637-6274**

This corner record was prepared by me or under my direction and supervision.

SEAL & SIGNATURE



Corner Name: Northeast corner - Original City of Cheyenne located in the SW 1/4 of Section: 29 T 14 N . R 66 W ; 6th P.M. Cross-Index No.: +/- U6 SBRPEPLS/PLSW: March 1994; PLSW January 1998

SURVEYOR'S REPORT

N.E. CORNER - BOND SURVEY OF 1890 - The NE corner of Cheyenne City, was located near the southeast corner of Lot 29, Block 12, Eastridge 3rd Filing, in the Andover Drive right of way.

In the City Engineer's Field Book 609, Page 19 (Aug. 1949), and Book 613, Page 52 (Mar. 30, 1951) we find two direct survey ties to the NE corner stone of the Bond Survey of 1890, from platted subdivision corner monuments in the immediate area.

The first survey tie was in August 1949, from the northeasterly corner of Block 2, Colonial Addition, approved in July 16, 1947. The original Colonial Addition corner monument used to tie to the Bond Stone was not found. Other monumentation in close proximity were found and observed in order to compute the position of the obliterated Colonial Addition corner monument, and then a computed position for the Bond Stone in relation thereto.

The second survey tie was on March 30, 1951 from multiple corners in Block 12, Eastridge 3rd Filing, which was approved on Nov. 20, 1950. Two of the original survey monuments along the westerly right of way of Andover Drive were found 18" to 24" below the current ground surface, thus perpetuating what I believe to be the original subdivision survey monuments. One at the "PC" in the front of Lot 28, and the second at the SE corner of Lot 31, Block 12. Using these two corner monuments and the survey ties in City Engineer Field Book 613, the Bond Survey Stone position was measured to a point on the sidewalk, almost directly in line with the lot line between Lots 29 and 30. This position fell within 0.18' of the computed position from the first, Colonial Addition tie. So this survey tied position is considered to be a very reliable representation of the original position of the Bond Survey stone of 1890. The position is now remonumented with a 3/4" dia. iron pipe, 3' long, and a 3" dia. survey brass cap, in a 4" dia. concrete cylinder set flush with the concrete sidewalk.

Note that the brass cap falls in a smaller section of the concrete sidewalk. I "CALLED BEFORE DIGGING" and requested a utility locate for the site. A gas pipeline locate was painted right across this narrow slab for the service line going into the residence. I removed the concrete section of sidewalk and very carefully dug approximately 18" deep and found nothing. I then proceeded to drive an iron rod very slowly into the ground approximately 3' to see if I encounter a large stone as described in the Bond Survey, but again found nothing. I speculate that perhaps the original Bond Stone was removed during placement of the gas line.

RECORDED PLATS OR REFERENCES

- COLONIAL ADDITION - MAY 1947
- EASTRIDGE THIRD FILING - AUGUST 1950
- AIRPORT PARKWAY - JANUARY 1991



Figure 1 - Reset Brass Cap.

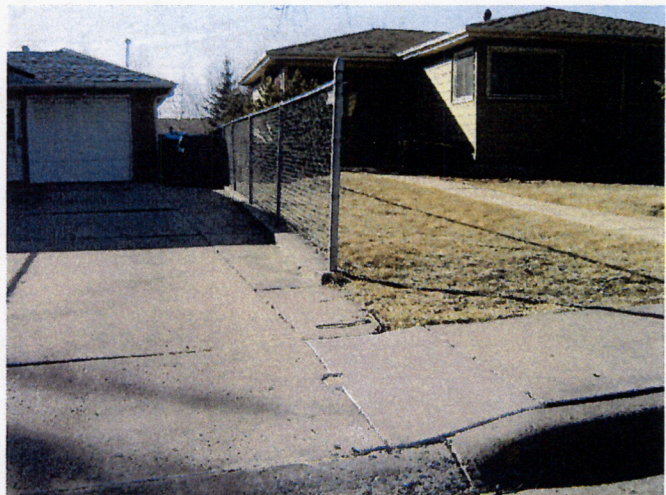


Figure 2 - Location in sidewalk off 1510 Andover Dr.

